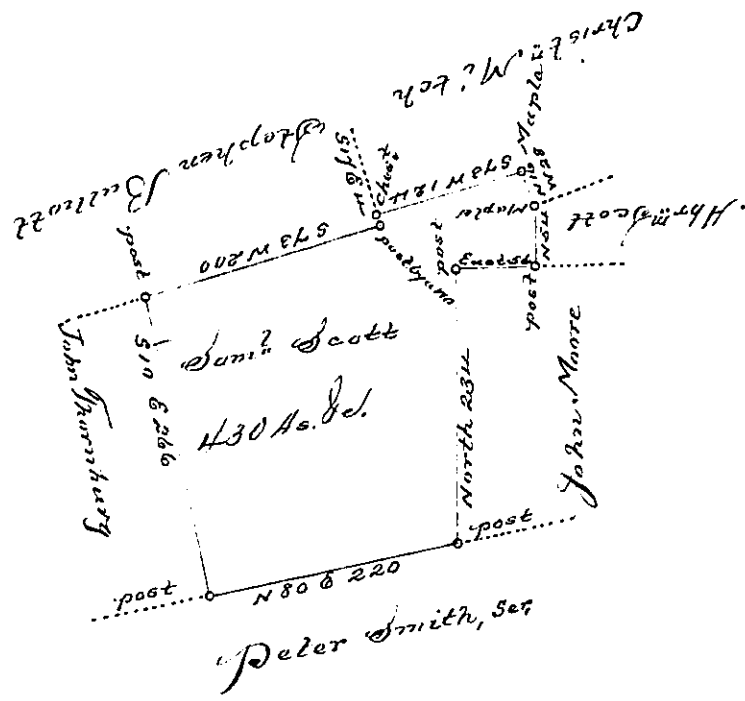


Hazle  
Luzerne



The Draught of a Tract of Land Called *Situata joining Land (as iterated)*  
 for John Thornburg in the County of Luzerne Containing four hundred and  
 thirty acres & Allorie - Surv'd for Saml Scott the 3<sup>d</sup> day of October  
 1793. by virtue of a warrant dated the 13<sup>th</sup> day of June 1793.  
 To *by Wm. Gray, D.D.*

Daniel Brockhead Esq.  
 Survt. Genl.

IN TESTIMONY that the above is a copy of the original remaining on file in the  
 Department of Internal Affairs of Pennsylvania, made con-  
 formably to an Act of Assembly approved the 16th day of  
 February, 1833, I have hereunto set my Hand and caused  
 the Seal of said Department to be affixed at Harrisburg, this  
third day of December, 1895

*James W. Fatta*  
 Secretary of Internal Affairs.